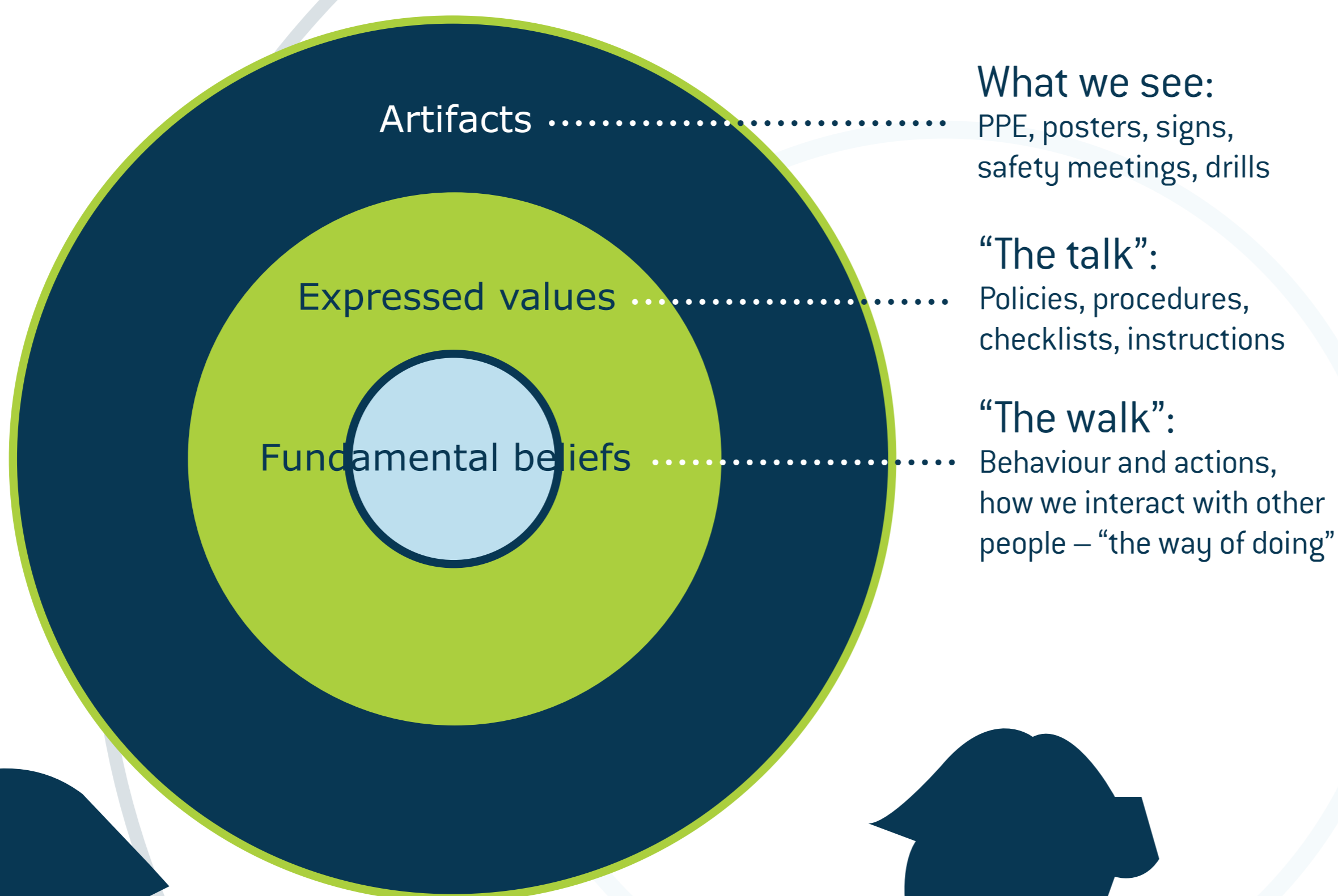


SAFETY CULTURE

Culture decides our behaviour. So when we discuss safety culture we are basically discussing our safety behaviour. Our behaviour influences our ability to carry out competent safety actions. People create culture.



SAFETY FOCUS NOTE

- Your focus on safety decides your safety culture
- The safety conduct of any seafarer will have an impact on the perception of safety on board
- “Half committed” behavior and statements will result in a “half committed” safety culture
- We need to discuss and develop our “people skills”